

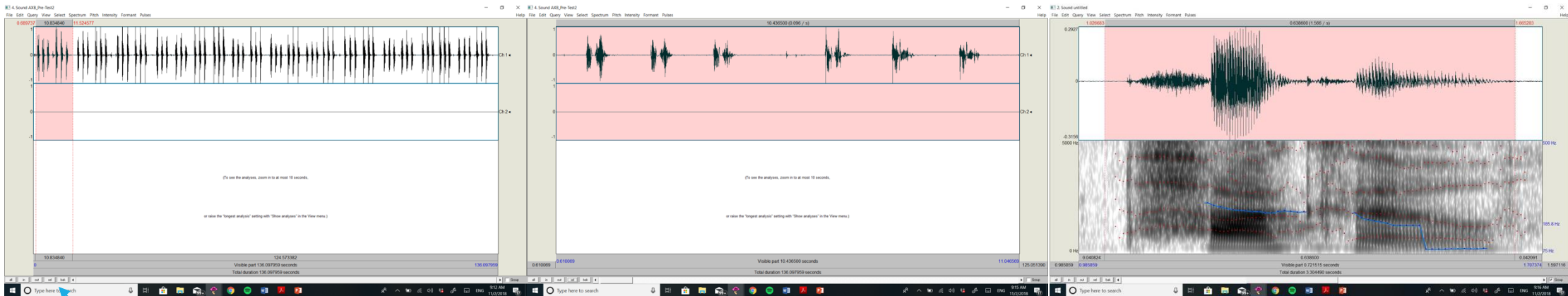


# Speech Visualization via Visual Feedback: Pronunciation and Dialectology Teaching

Heather M. Offerman & Louis Gehrke

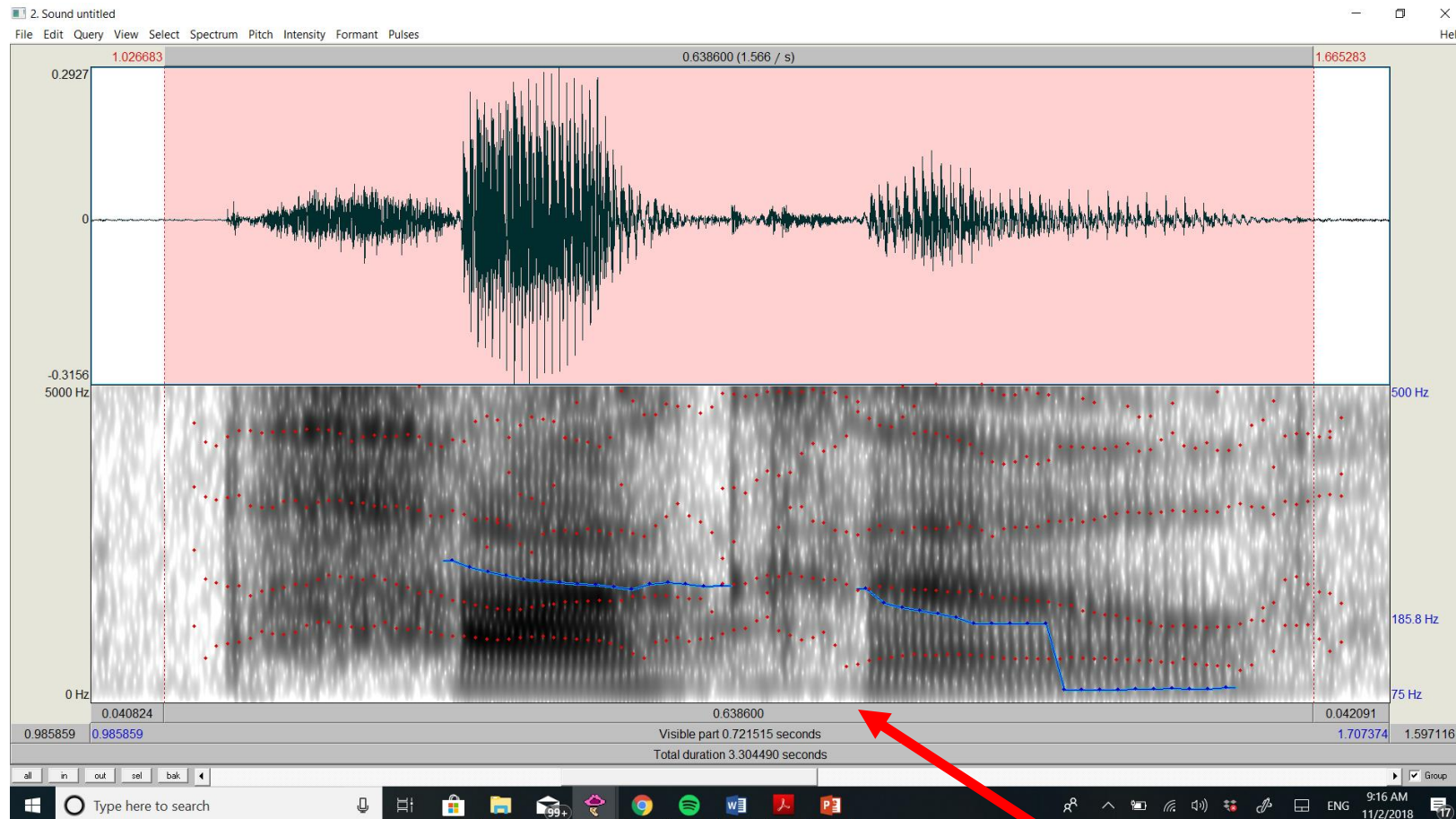
# VISUAL FEEDBACK FOR PRONUNCIATION

1. To open Praat: Open Praat on your computer tablet
2. The window on the left that says “Praat Objects”, click “Open”
3. Choose the first option “Read from file”
4. Find the .wav file you saved for “Di\_\_\_\_\_de nuevo”, select it, then click “Open”
5. Once it is on your list, click on your file and click “View & Edit” on the right hand side
6. Once you, have done this, select the first 3 sentences that start with “Di\_\_\_\_\_ de nuevo” (you can do this by dragging your cursor, then hitting “sel” at the bottom of the window; to go back click “out”)
7. Now, try finding the first word “Paco” within the first “Di\_\_\_\_\_ de nuevo”



# VISUAL FEEDBACK FOR PRONUNCIATION

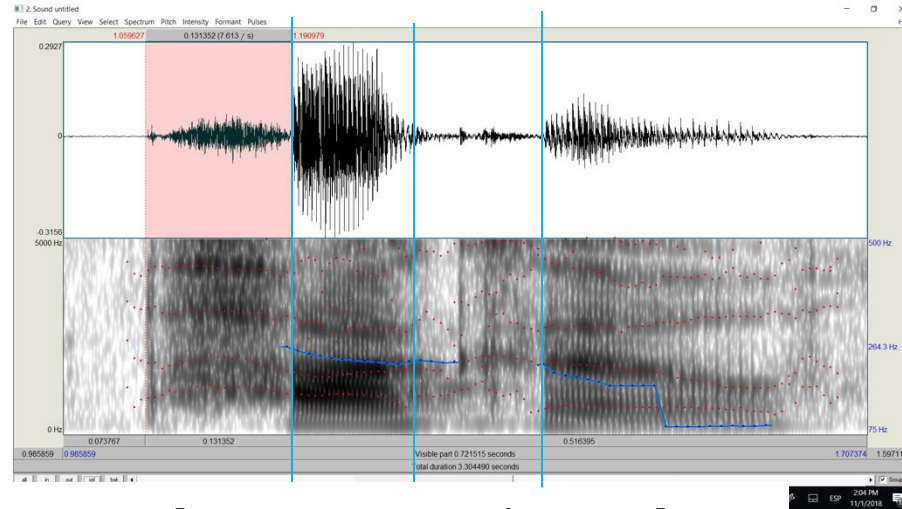
1. To play the sound so that you can hear where your word is drag and select a section (in pink) and click the first gray bar at the bottom



# English and Spanish

Visual Feedback

# WHERE IS THE “P” /P/ AND THE “A” /A/ FOR BOTH?

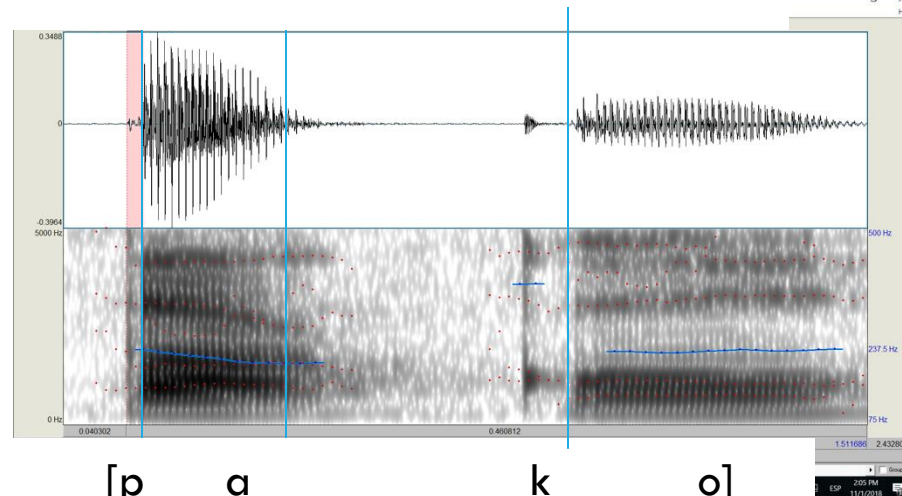


[p a k o]

“Paco”  
[p<sup>h</sup>] = ~60ms



American English  
Speaker



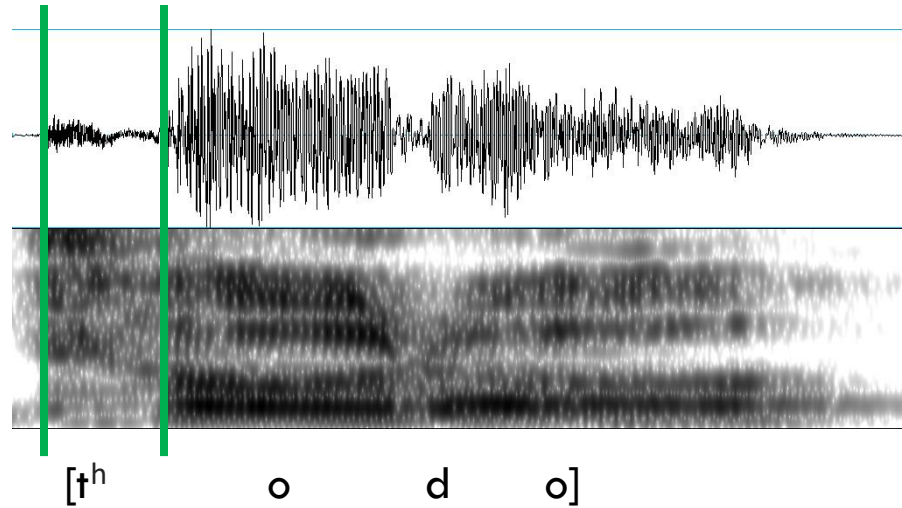
[p a k o]

“Paco”  
[p] = ~4ms



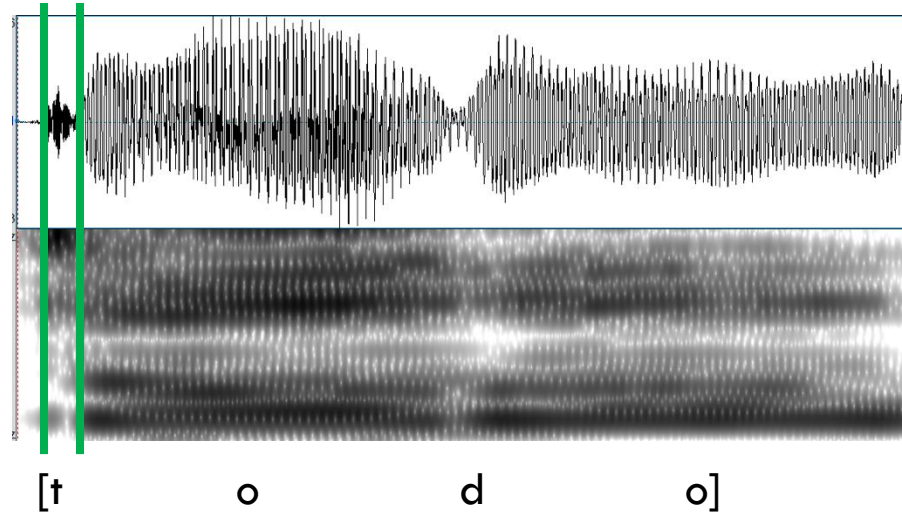
Native Spanish  
Speaker (PR)

# WHERE IS THE “T” /T/ AND THE “O” /O/ FOR BOTH?



American English  
Speaker

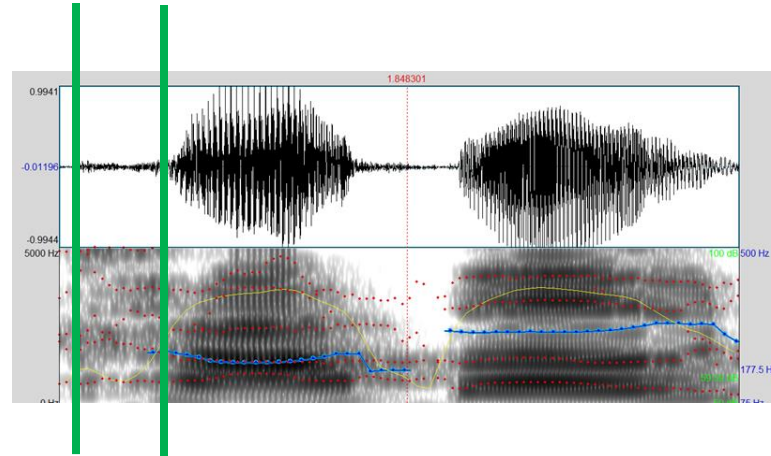
“todo”  
[t<sup>h</sup>] = ~ 70ms



Native Spanish  
Speaker (PR)

“todo”  
[t] = ~ 10ms

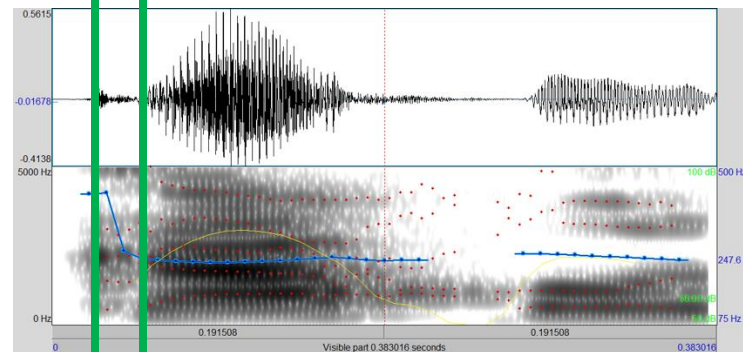
# WHERE IS THE “C” /K/ AND THE “A” /A/ FOR BOTH?



American English  
Speaker

“capo”  
[k<sup>h</sup>] = ~80ms

[k<sup>h</sup>] a p o]



Native Spanish  
Speaker (PR)

“capo”  
[k] = ~30ms

[k] a p o]

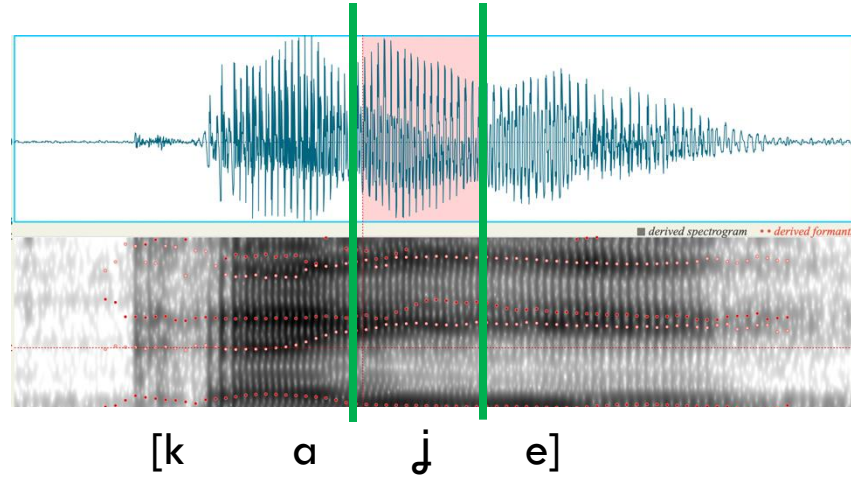
# Spanish Dialectal Variation

Visual Feedback



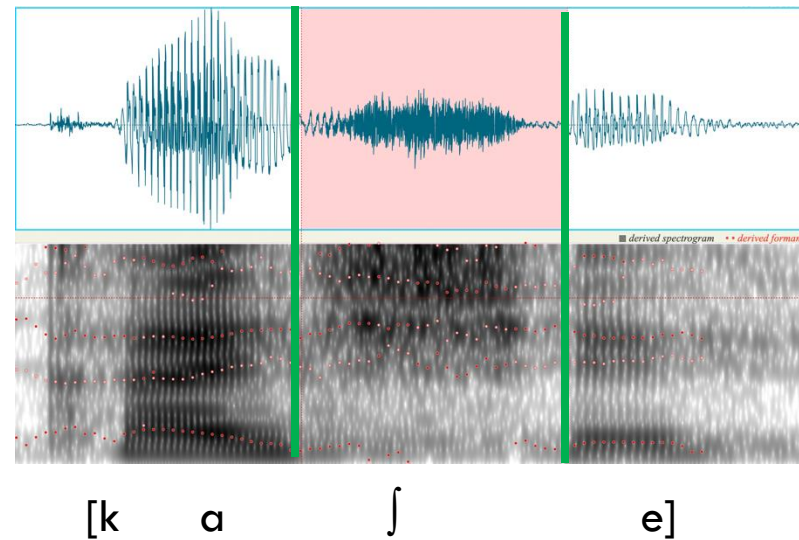
# /j/ (“Y” SOUND) VS. /ɲ/ (“SH” SOUND) IN THE SPANISH WORD “CALLE”

“calle”



“yeísmo” Spanish

“calle”



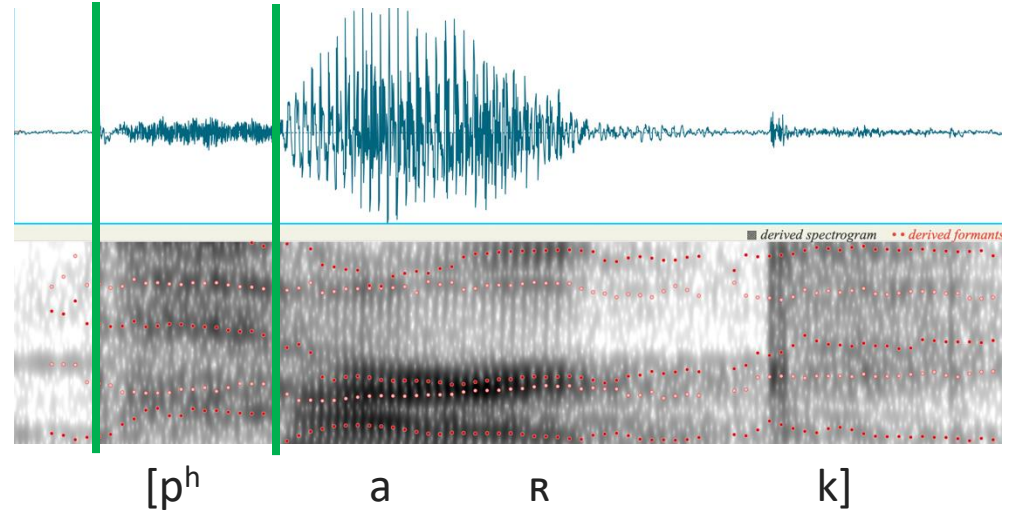
“sheísmo”  
Spanish from  
Buenos Aires,  
Argentina  
(example)

The background features a solid blue color with a pattern of thin, white, wavy lines that create a sense of motion and depth. A dark blue rectangular area is positioned in the center, serving as a backdrop for the text.

**French**

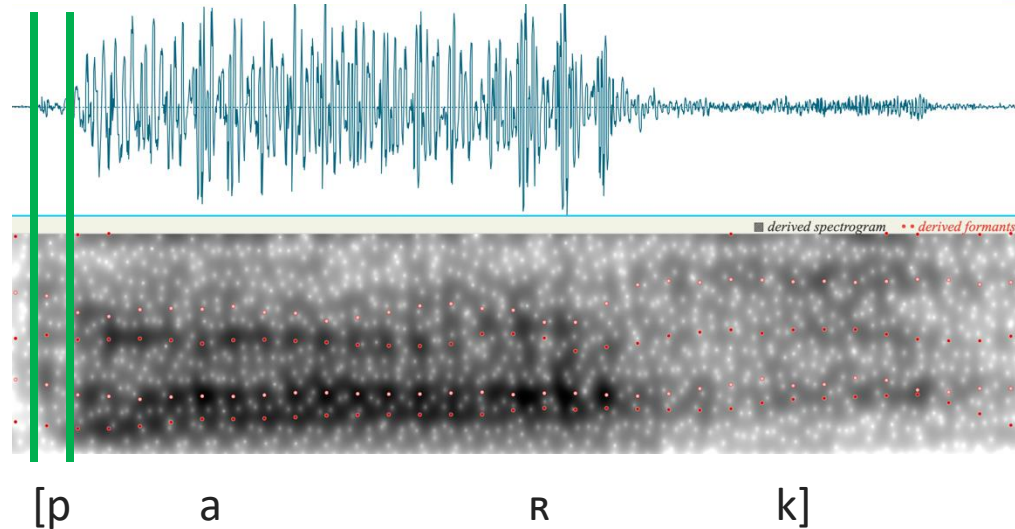
**Visual Feedback**

# WHERE IS THE “P” /P/ FOR BOTH?



American English Speaker

“parc”  
[p<sup>h</sup>] = ~99ms



Native French Speaker

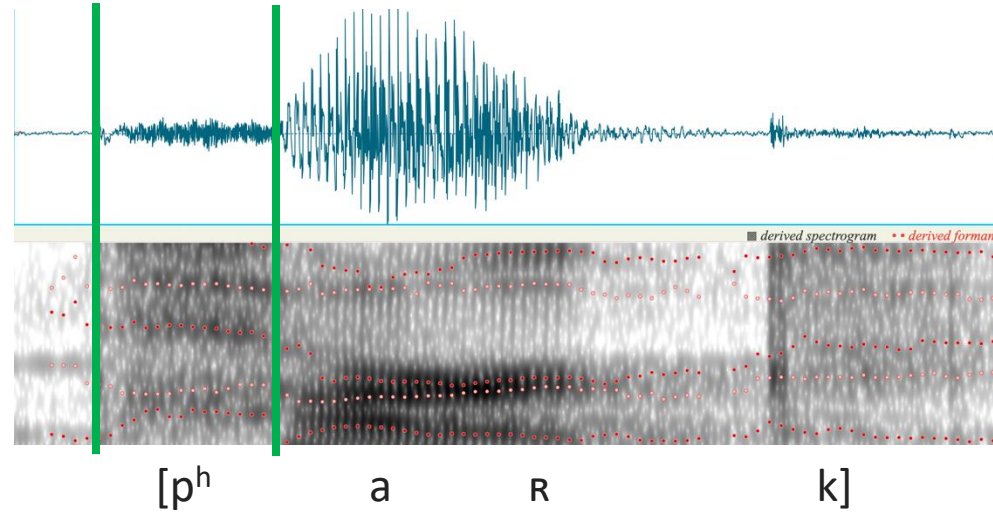
“parc”  
[p] = ~8ms



German

Visual Feedback

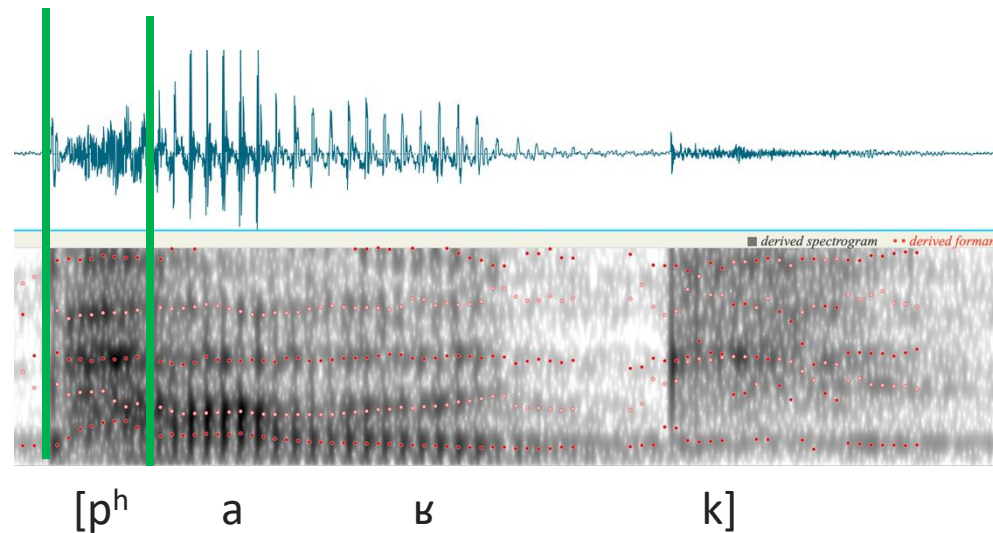
# WHERE IS THE “P” /P/ FOR BOTH?



American English  
Speaker

“park”

~99ms



Native German  
Speaker

“Park”

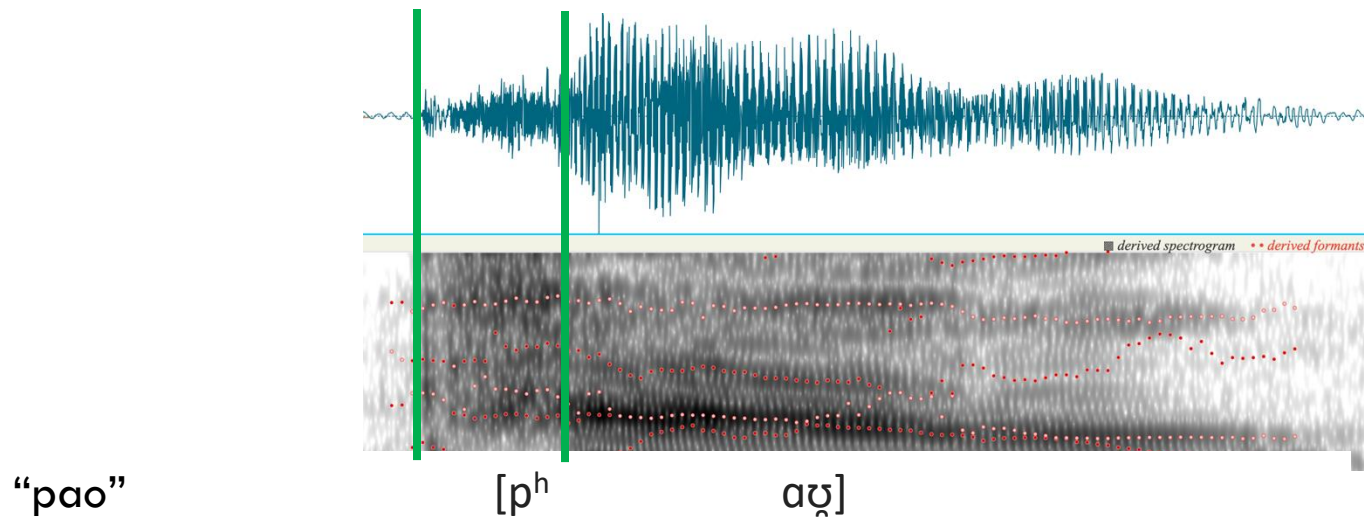
~51ms



**Mandarin**

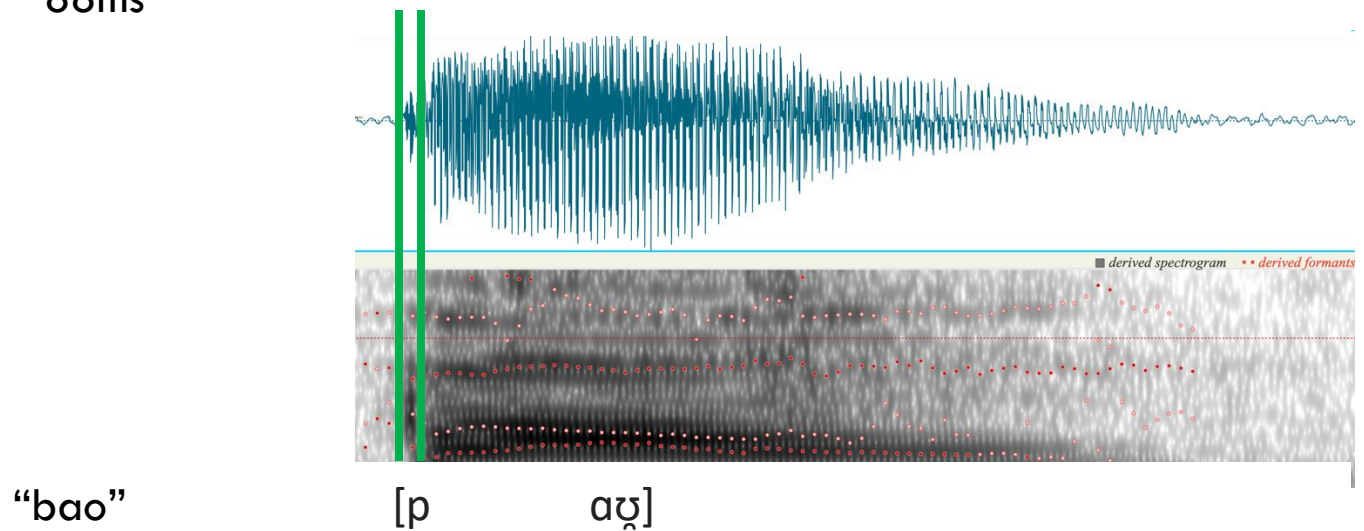
**Visual Feedback**

# WHERE IS THE “P” /P/ FOR BOTH?



Native Mandarin Speaker

~88ms



Native Mandarin Speaker

~8ms